

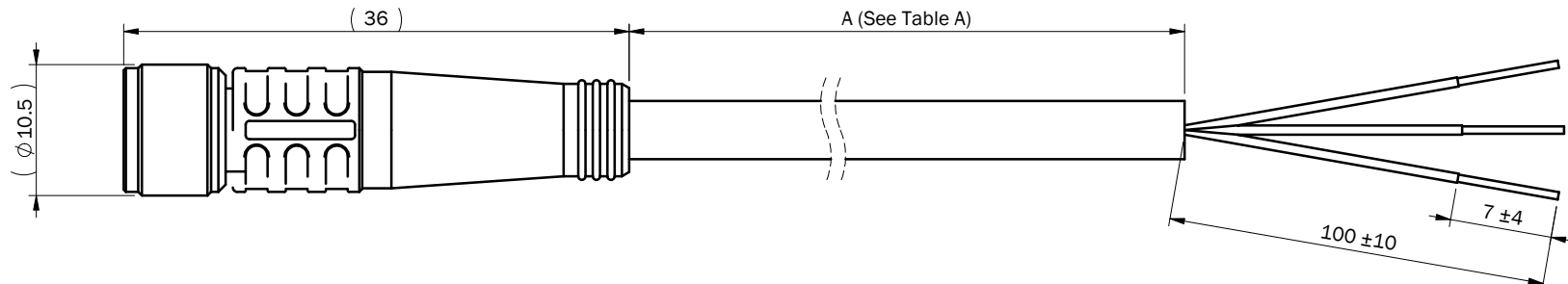
Notes:

Cable Specifications:

- Temperature Range: -25C ~ 80C
- Contact Current Rating: 3A
- Voltage Rating: 60V
- Contact Resistance: $\leq 5m\Omega$
- Protection: IP65 (End A only; mated to approved connector)
- 3 x 24 AWG conductors
- Connector Compatible with IEC-61076-2-104

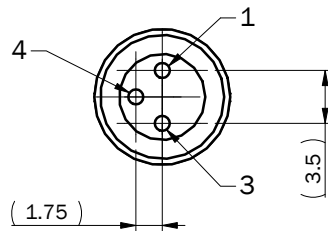
Material Specifications:

- Cable Jacket: Black PVC Cable per UL2464
- Connector Nut: Brass M8X1.0 with Nickel Plating
- Terminal Housing: Black PAGF
- Connector Terminals: Brass with Gold Plating
- O-ring: Silicone
- Connector Overmold: Black TPU



End A:
M8 - 3 pin Female Contacts

End B:
24 AWG Wire leads -
stripped to
specifications above



Pin #	Wire
1	Brown
3	Blue
4	Black

Table A

Part Number	A (mm)	Rev
A-CBL-M8-03P-F-0200	2000 ± 50	A
A-CBL-M8-03P-F-0500	5000 ± 100	A
A-CBL-M8-03P-F-1000	10000 ± 100	A

Standard Third Angle Projection
Units: mm
Unless specified otherwise:
Refer to ISO 2768-mK for tolerances
Break Sharp Edges

Drawing Name: A-CBL-M8-03P-F-XXXX-OUTL
M8 3-pole female cable

Material: PVC, TPU see notes	Finish:	Drawn: B Nagel	Date: 02/18/13	Rev: B
		Model:	Project:	
Size: A	Scale: 2:1	Sheet 1 of 1		

ENFIELD TECHNOLOGIES
35 Nutmeg Drive
Trumbull, CT 06611
(203) 375-3100
www.enfieldtech.com
This information is proprietary to Enfield Technologies and may be further protected by trademarks, copyrights, or patents.