

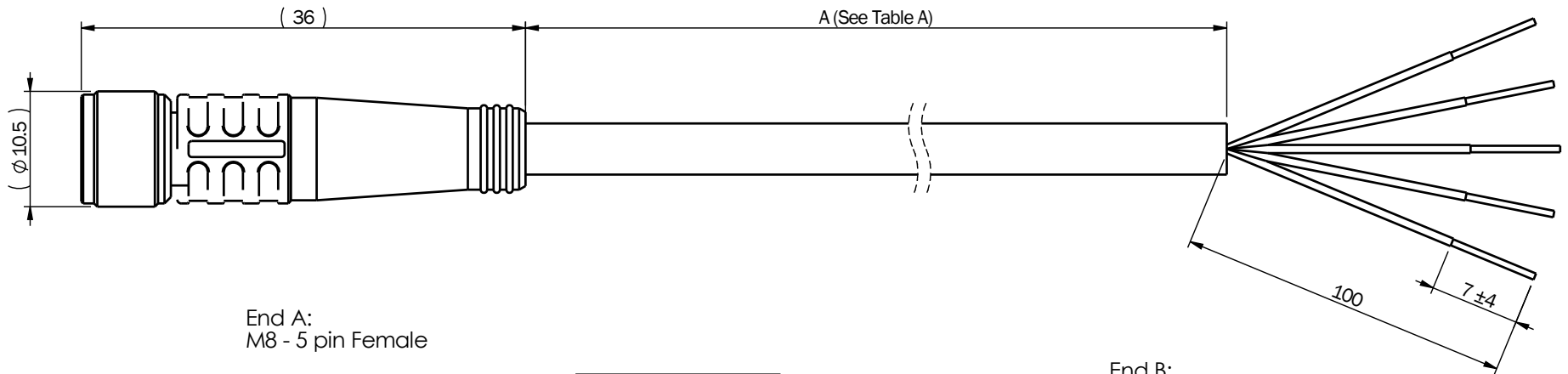
Notes:

Cable Specifications:

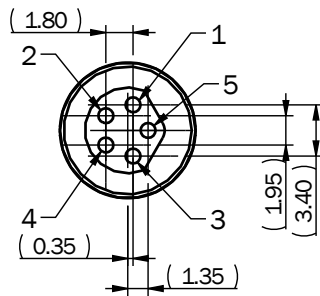
- Temperature Range: -25C ~ 80C
- Contact Current Rating: 3A
- Voltage Rating: 60V
- Contact Resistance: $\leq 5m\Omega$
- Insulation Resistance: $\geq 20M\Omega$
- Protection: IP65 (End A only; mated to approved connector)
- Connector Compatible with IEC-61076-2-104

Material Specifications:

- Cable Jacket: Black PVC cable per UL2464
- Connector Nut: Brass M8X1.0 with Nickel Plating
- Terminal Housing: Black PAGF
- Connector Terminals: Brass with gold plating
- O-ring: Silicone
- Connector Overmold: Black TPU



End A:
M8 - 5 pin Female

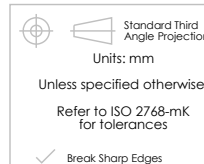


Pin #	Wire
1	Brown
2	White
3	Blue
4	Black
5	Grey

End B:
24 AWG Wire leads -
stripped to
specifications above

Table A

Part Number	A (mm)	Rev
A-CBL-M8-05P-0200	2000 ± 50	A
A-CBL-M8-05P-0500	5000 ± 100	A
A-CBL-M8-05P-1000	10000 ± 200	A



Drawing Name: A-CBL-M8-05P-F-XXXX-OUTL
M8 5-pole female cable

Material: PVC, TPU see notes	Finish: None	Drawn: B Nagel	Rev: B
Date: 02/18/13		Model: Project:	
Size: A	Scale: 2:1	Sheet 1 of 1	

ENFIELD TECHNOLOGIES
35 Nutmeg Drive
Trumbull, CT 06611
(203) 375-3100
www.enfieldtech.com
This information is proprietary to
Enfield Technologies and may be
further protected by trademarks,
copyrights, or patents.