

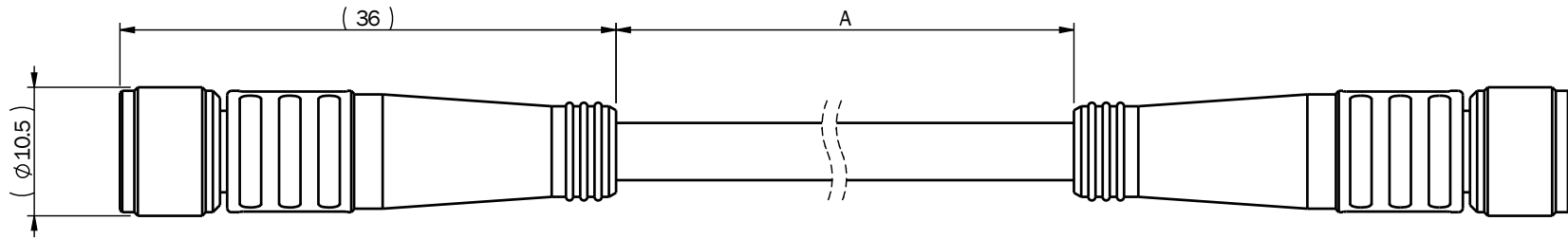
Notes:

Cable Specifications:

- Temperature Range: -25C ~ 80C
- Contact Current Rating: 3A
- Voltage Rating: 60V
- Contact Resistance: $\leq 5m\Omega$
- Insulation Resistance: $\geq 20M\Omega$
- Protection: IP65 (mated to approved connectors)
- Connector Compatible with IEC-61076-2-104

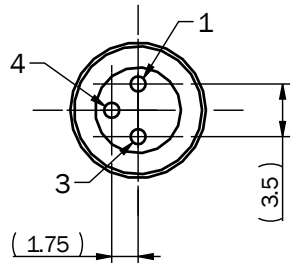
Material Specifications:

- Cable Jacket: Black PVC cable per UL2464
- Connector Nut: Brass M8X1.0 with Nickel Plating
- Terminal Housing: Black PAGF
- Connector Terminals: Brass with gold plating
- O-ring: Silicone
- Connector Overmold: Black TPU

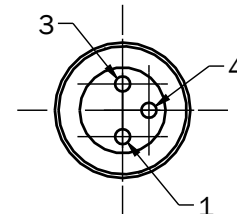


End A:
M8 - 3 pin Female Contacts

End B:
M8 - 3 pin Female Contacts



Pin #	Wire
1	Blue
3	Brown
4	Black



Pin #	Wire
1	Blue
3	Brown
4	Black

Table A

Part Number	A (mm)	Rev
A-CBL-M8M8-03P-FF-0025	250 ± 30	A
A-CBL-M8M8-03P-FF-0200	2000 ± 50	A
A-CBL-M8M8-03P-FF-0500	5000 ± 100	A

Standard Third Angle Projection
Units: mm

Unless specified otherwise:
Refer to ISO 2768-mK for tolerances

Break Sharp Edges

Drawing Name: A-CBL-M8M8-03P-FF-XXXX-OUTL
M8 3-pole female-female cable

Material:
PVC, TPU
see notes

Finish:

Drawn: B Nagel

Date: 02/18/13 Rev: B

Model: Project:

Size: A Scale: 2:1 Sheet 1 of 1



35 Nutmeg Drive
Trumbull, CT 06611
(203) 375-3100
www.enfieldtech.com
This information is proprietary to
Enfield Technologies and may be
further protected by trademarks,
copyrights, or patents.