

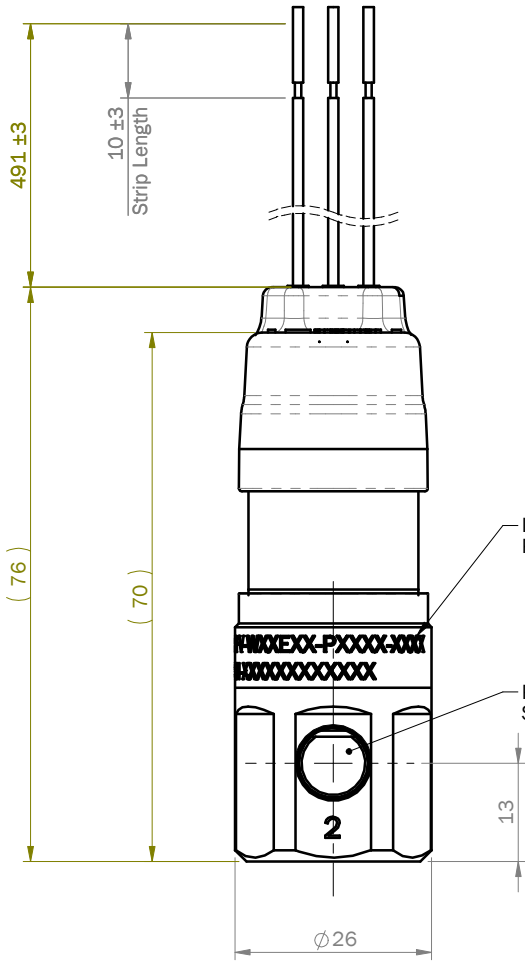
DCN: DCN-0388  
 Change: NPT ports , Added electrical connection info

Changed: 8/17/2018 Eng B

Approved: 11/07/18 J Gamble

Notes:

1. Refer to PFV Operating Manual for Wiring Setup & Operating Procedures
2. The two pneumatic connection ports are 1/8 NPT
3. Electrical Connections
  - 22 AWG 491±5 Flying Leads
  - See Detail A for Lead Assignment
4. Environmental Specification
  - Operating Temperature -20° to 50°C



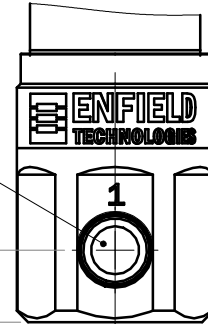
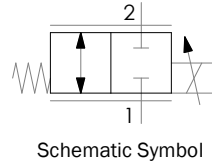
Laser Marked with P/N and S/N

Port 2 See Note 2

Port 1 See Note 2

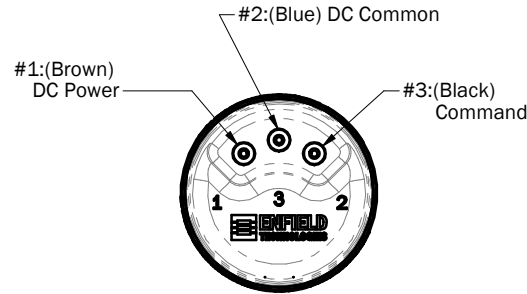
13

∅26

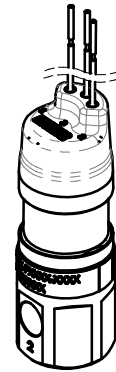


9.5

Rear View



Electrical connections see Part number key for specific voltage and signal levels)



Part number key:

PFV - WXXEXX - PXXXX - XXXX

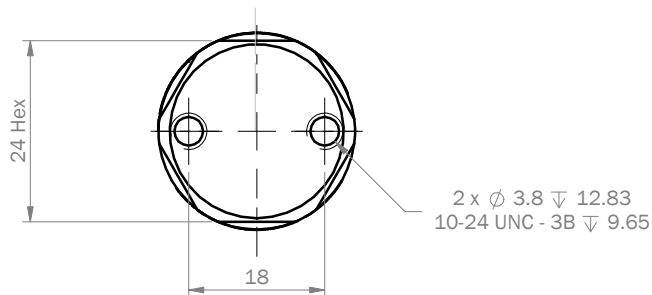
Max Coil Voltage  
 12 = 12v  
 24 = 24v

Calibration Pressure (kPa)

Input Signal  
 01 = 0-10V  
 02 = 0-20mA  
 05 = 0-5V

Orifice Diameter  
 012 = ∅0.12 mm  
 050 = ∅0.50 mm  
 075 = ∅0.75 mm  
 100 = ∅1.00 mm  
 125 = ∅1.25 mm  
 150 = ∅1.50 mm  
 175 = ∅1.75 mm  
 200 = ∅2.00 mm  
 225 = ∅2.25 mm

Seals  
 C = FKM (Viton)  
 E = EPDM  
 K = FFKM (Kalrez)



Standard Third Angle Projection  
 Units: mm  
 Unless specified otherwise:  
 Refer to ISO 2768-mK for tolerances  
 Break Sharp Edges

Drawing Name: PFV-WXXEXX-PXXXX-XXXX-OUTL  
 NPT Ported PFV Valve with Linear Driver

Material: N/A	Finish: N/A	Drawn: Eng B	Date: 07/24/18	Rev: A
Model: PFV	Project: PR-1044K	Size: A	Scale: 1:1	Sheet 1 of 1

**ENFIELD TECHNOLOGIES**  
 % @g\_ v\_ 6dhw  
 Fd\_ Tg^ CT 06( #  
 (203) 375-3100  
 www.enfieldtech.com  
 This information is proprietary to Enfield Technologies and may be further protected by trademarks, copyrights, or patents.