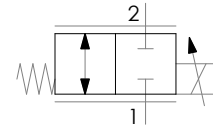
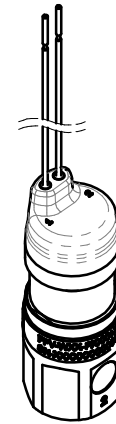


Notes:

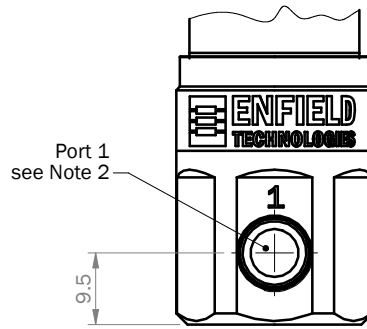
1. Refer to PFV Operating Manual for Wiring Setup & Operating Procedures
2. The two pneumatic connection ports are 1/8 NPT
3. Electrical Connections
 - 22 AWG 493 ± 5 Flying Leads
4. Environmental Specification
 - Operating Temperature -20° to 50 °C



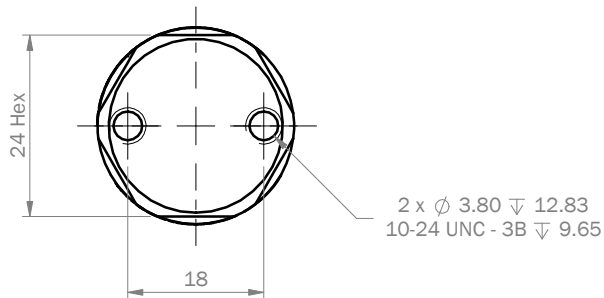
Schematic Symbol



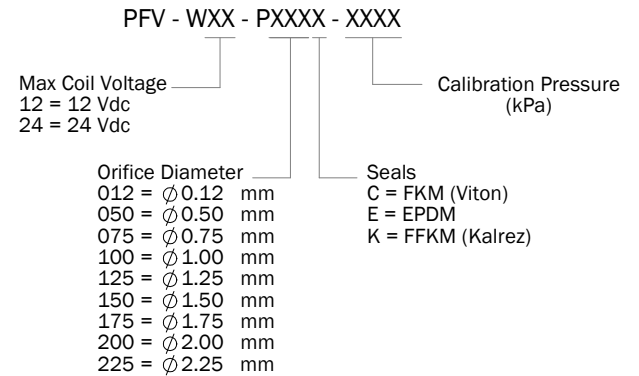
Scale 1:2



Rear View



Part number key:



Standard Third Angle Projection
 Units: mm
 Unless specified otherwise:
 Refer to ISO 2768-mK for tolerances
 Break Sharp Edges

Drawing Name: PFV-WXX-PXXXX-XXXX-OUTL NPT Ported PFV Valve		Drawn: Eng B	
Material: N/A	Finish: N/A	Date: 07/19/18	Rev: A
Model: PFV		Project: 1044K	
Size: A	Scale: 1:1	Sheet 1 of 1	

ENFIELD TECHNOLOGIES
 50 Waterview Drive
 Shelton, CT 06484
 (203) 375-3100
 www.enfieldtech.com
This information is proprietary to Enfield Technologies and may be further protected by trademarks, copyrights, or patents.