

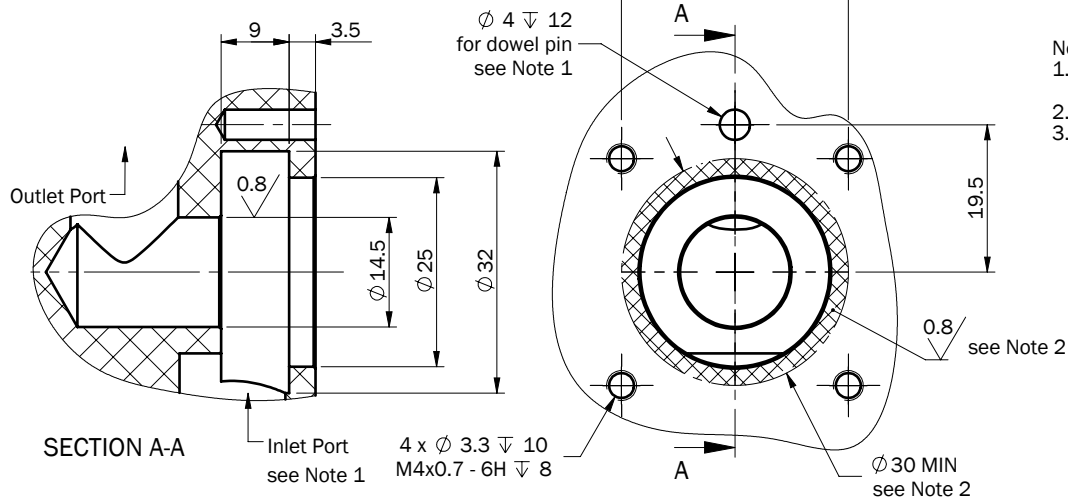
DCN:
DCN-0490

Change:
Drawing revised throughout. Added i04 command option

Changed:
2/2/21 J Gamble

Approved:
- -

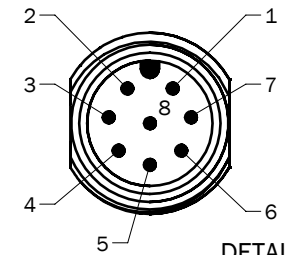
Recommended Mounting



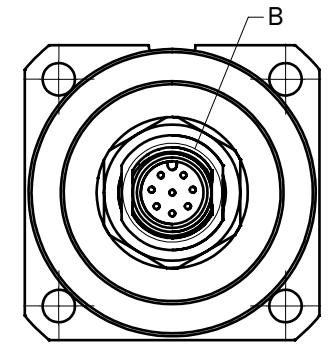
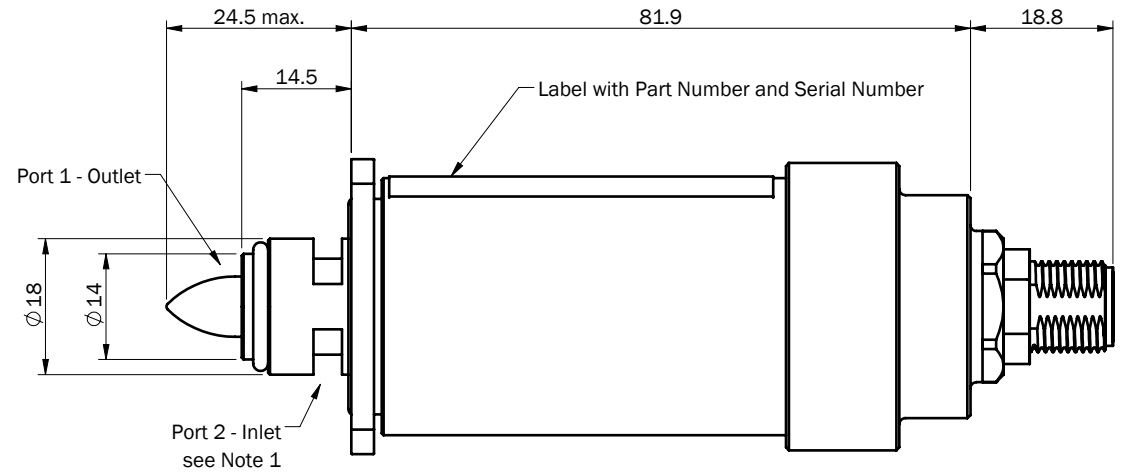
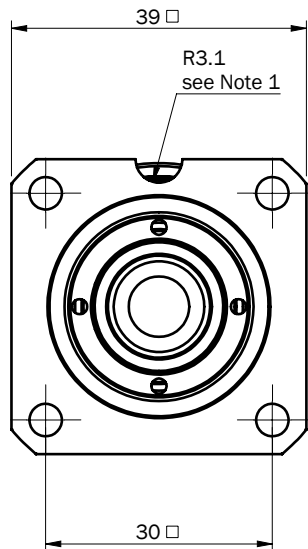
Note:

1. Inlet flow must be in line with notch in mounting flange. Use dowel pin to insure valve is installed in the correct orientation
2. O-ring sealing area
3. Electrical connection: 8-Pin M12 Male - see Detail B for pin assignments
Max Torque 0.6Nm. Compatible with Enfield cable part number: A-CBL-M12-08P-F-XXXX

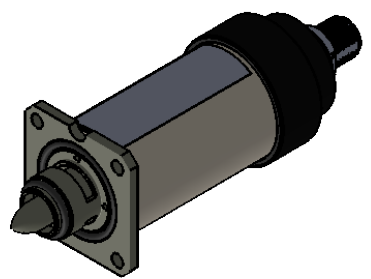
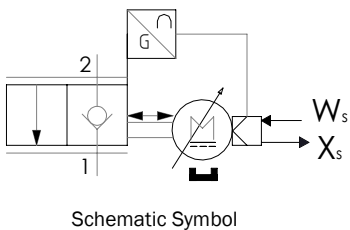
- Pinout:
1. N/C
 2. DC Power
 3. Command Input (-)
 4. Command Input (+)
 5. N/C
 6. Monitor Output
 7. DC Common
 8. Out Common



DETAIL B
SCALE 2 : 1



Part number key:
RCV - 075 - XXX
Command Signal
u01 = 0..10V
u05 = 0..5V
i04 = 4..20mA



Standard Third Angle Projection
Units: mm
Unless specified otherwise:
Refer to ISO 2768-mK for tolerances
Break Sharp Edges

Drawing Name: RCV-075-XXX-OUTL		2-Port Servo Proportional Seat Valve	
Material:	Finish:	Drawn: J Gamble	Date: 05/11/20
		Rev: A	Project: PR-1072D
Model: RCV	Project: PR-1072D	Size: A	Scale: 1:1
		Sheet 1 of 1	

ENFIELD TECHNOLOGIES
50 Waterview Drive
Shelton, CT 06484
(203) 375-3100
www.enfieldtech.com
This information is proprietary to Enfield Technologies and may be further protected by trademarks, copyrights, or patents.