

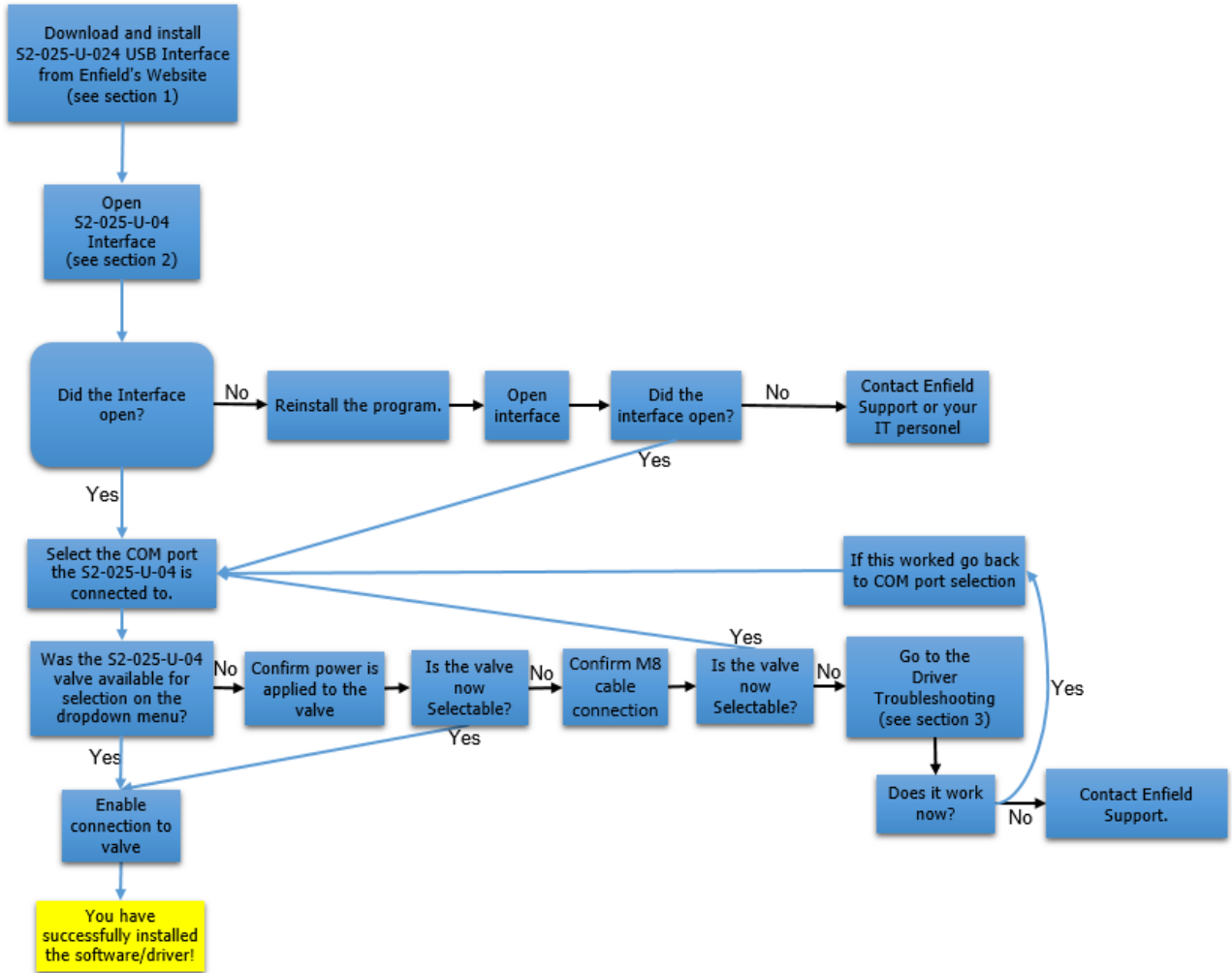


**S2-025-U-04 (USB S2)  
Servo Pneumatic Proportional Control System**

**Driver Setup and Installation**

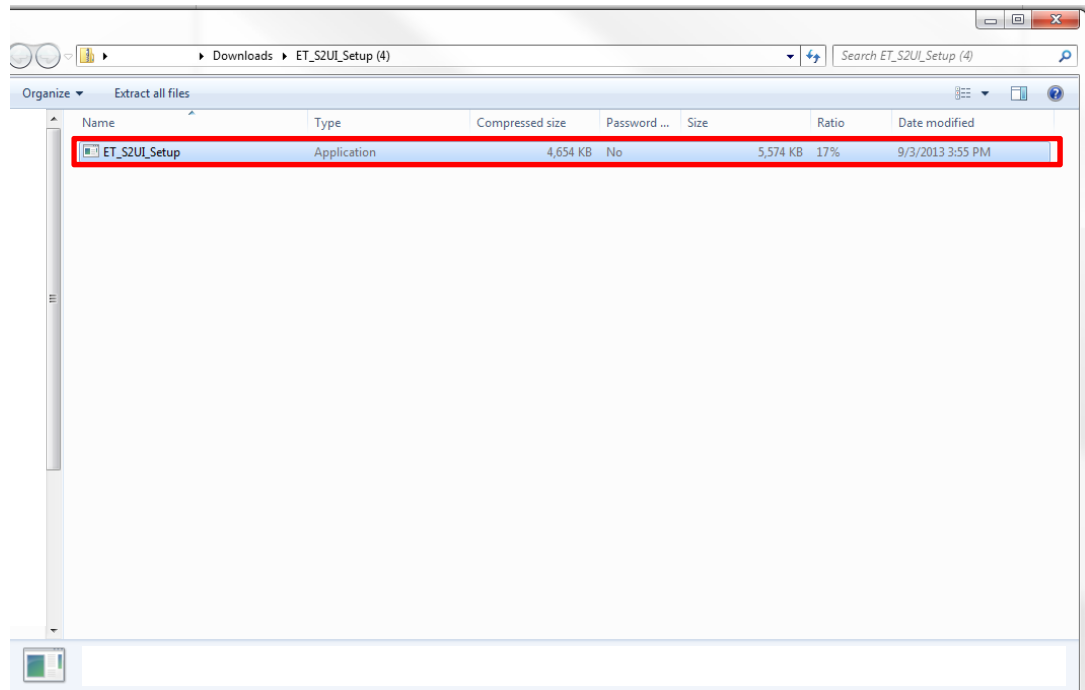


# S2-025-U-04 Flowchart

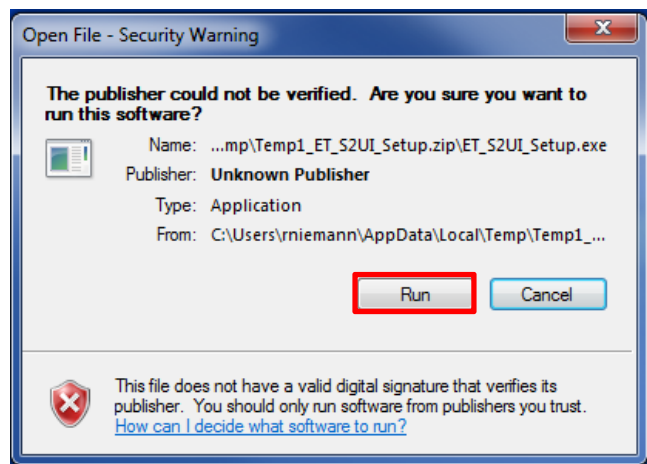


## 1. Connect to Valve

- a. Download the S2-025-U-04 USB software found on Enfield Technologies website:  
<http://enfieldtech.com/products/positioning-system/>
- b. After the software package “ET\_S2UI\_Setup.zip” has downloaded, double click on the highlighted file, and shown below in the red box (Usually the file can be found in the Downloads folder).



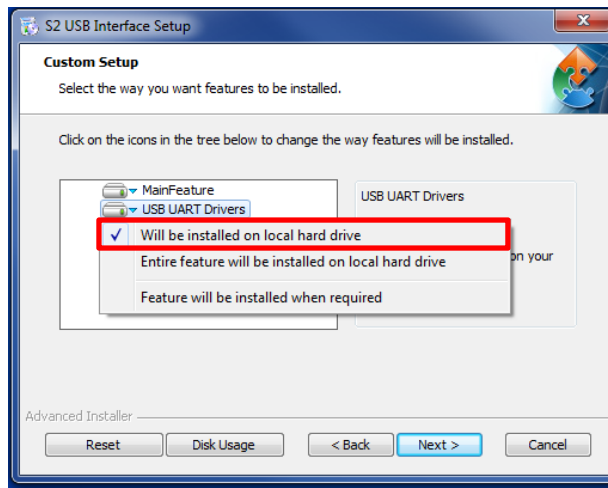
- c. Click the “Run” button shown in the red box below.



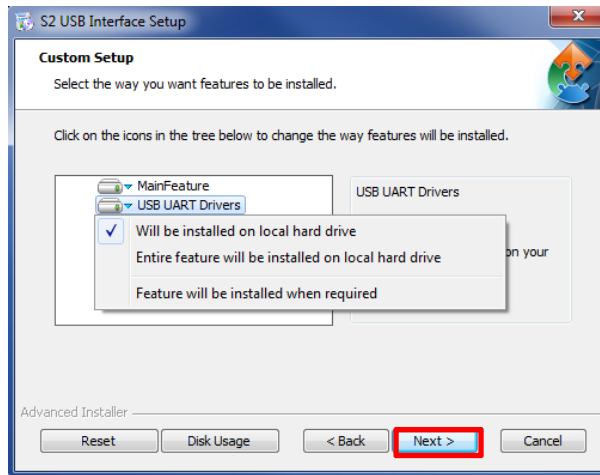
- d. Click the “Next >” button shown in the red box below.



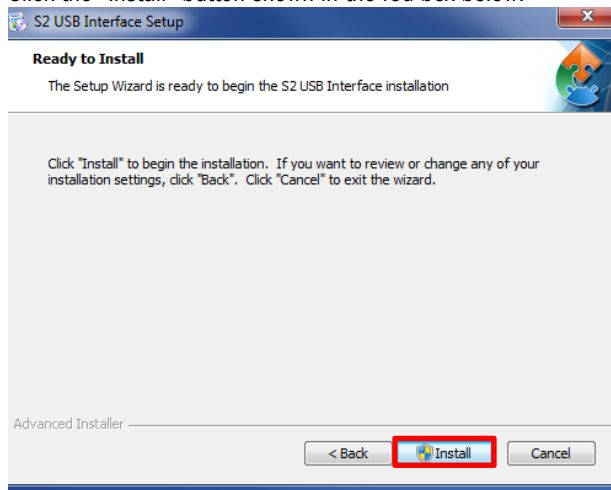
- e. Confirm the software will be installed on the local hard drive by clicking USB UART Drivers and making sure the check box next to “Will be installed on local hard drive” is checked.



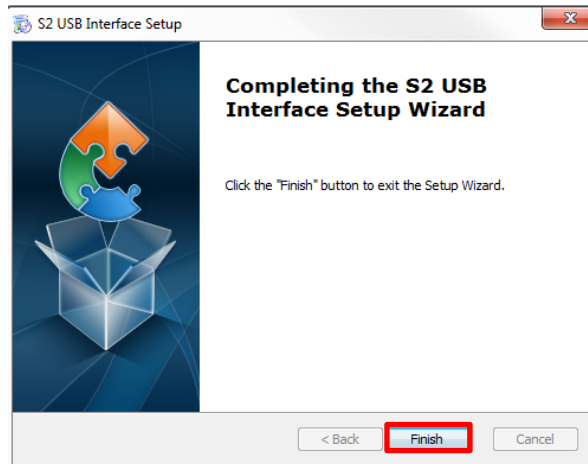
- f. Click the “Next >” button shown in the red box below.



- g. Click the “Install” button shown in the red box below.



- h. Click the “Finish” button shown in the red box below.



## 2. Opening S2-025-U-04 USB Interface.

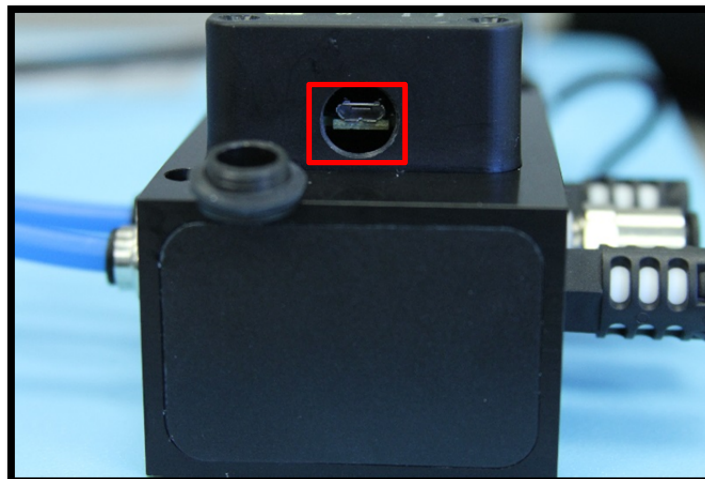
- a. Once you have completed the installation, locate your desktop icon of the S2-025-U-04 USB Interface. Double click on this icon to open the S2-025-U-04 USB interface shown in the red box below.



- b. Before connecting the USB cable to the S2-025-U-04, ensure that the power is turned off (NOTE: Power LED will not be lit.) If needed in future steps, connect/disconnect the USB cable on the computer side instead of the valve side.



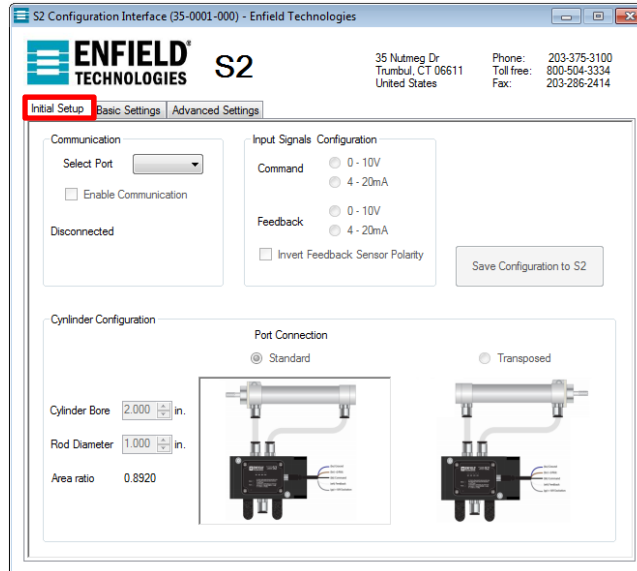
- c. Connect Enfield Technologies' USB cable, A-CBL-SAUB-0405P-MM-XXXX, or equivalent from the computer to the S2-025-U-04 valve. (Notice: The wider portion of the cable faces up shown in red box.)



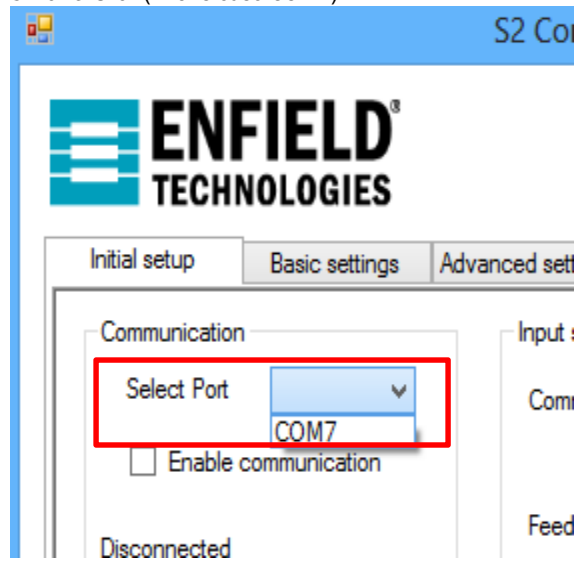
- d. Power the S2-025-U-04 valve (refer to the user's manual for wiring instructions and power requirements). Once powered, the red LED will be illuminated.



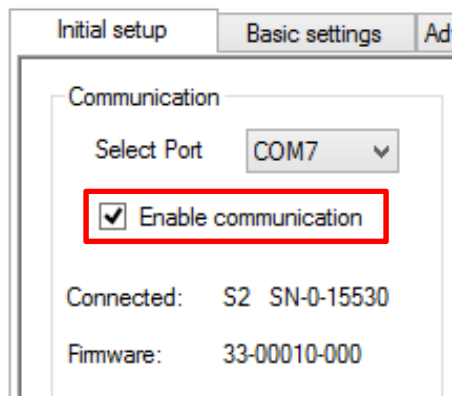
- e. Click on the "Initial Setup" tab to display the screen below.



- f. Once there, click on the “Select Port” drop down menu and select the COM port associated with the S2-025-U-04(In this case COM7).

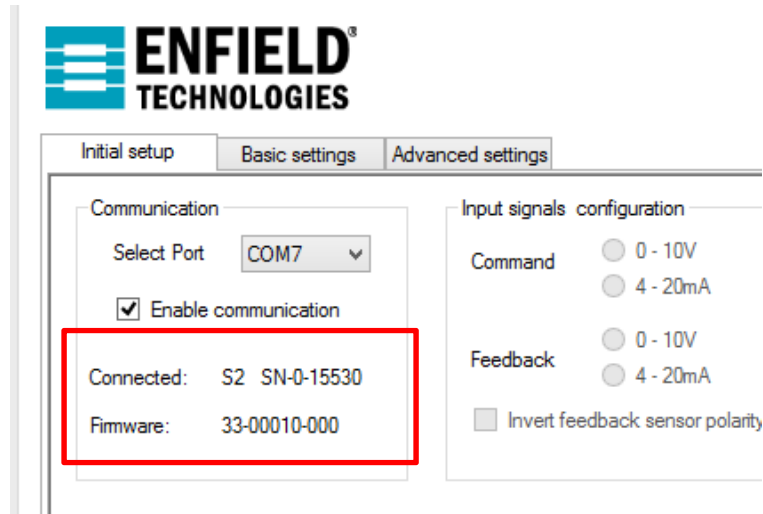


- g. Then, click the “Enable Communication” checkbox.



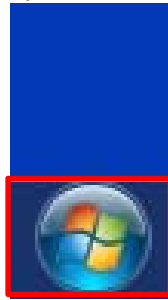


- h. The valve should now be connected. Valve serial number and software version will now be displayed (shown below in the red box).

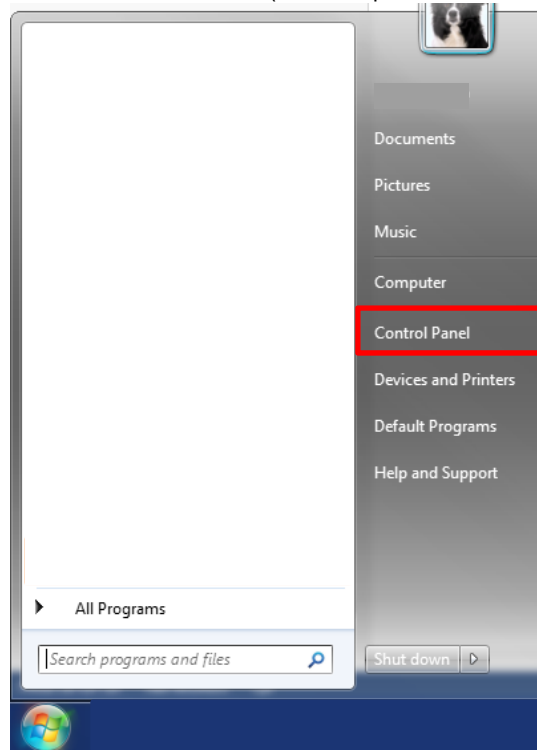


**3. How to install/detect the S2-025-U-04 Communication Drivers**

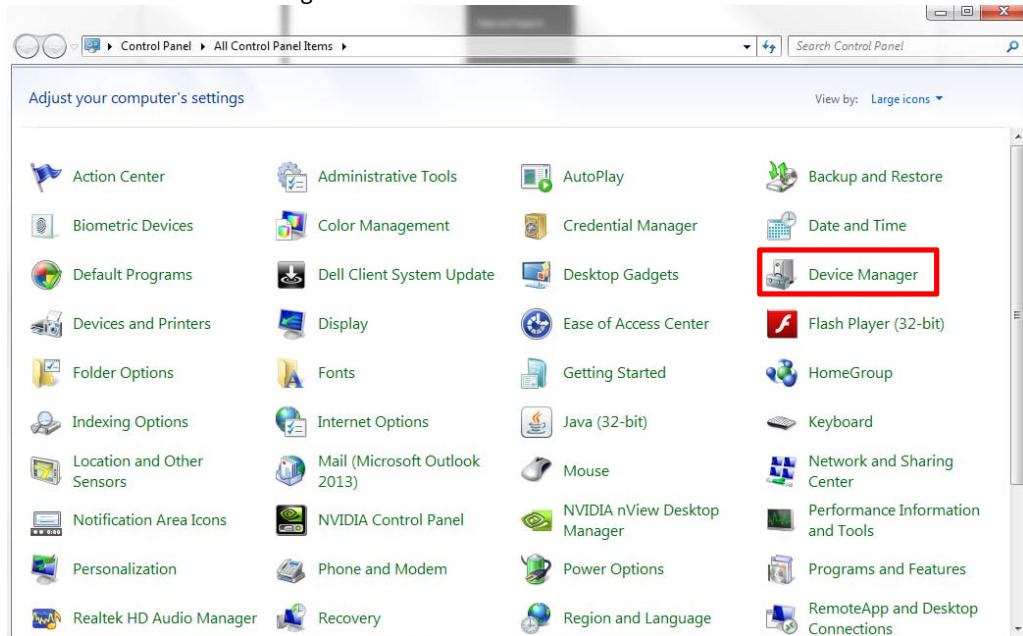
- a. Open the Start Menu (located in the bottom left hand corner of your screen, as shown below).



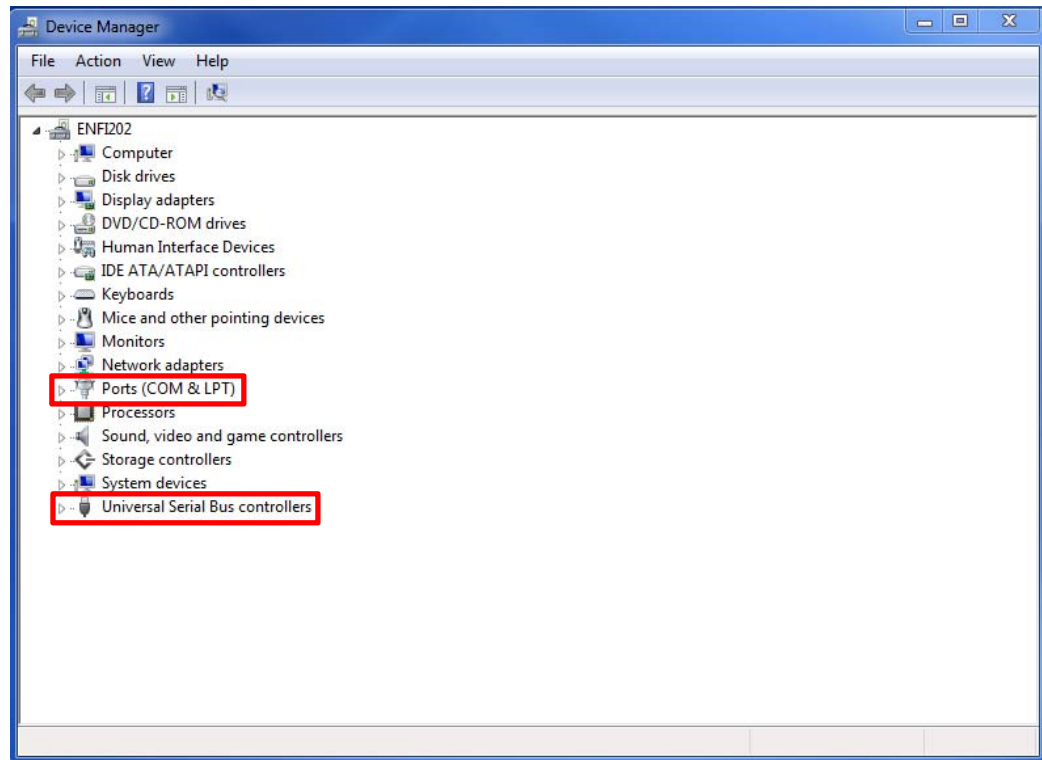
- b. Then click "Control Panel" (This example is Windows 7).



- c. Double click on “Device Manager” as shown in the red box below.



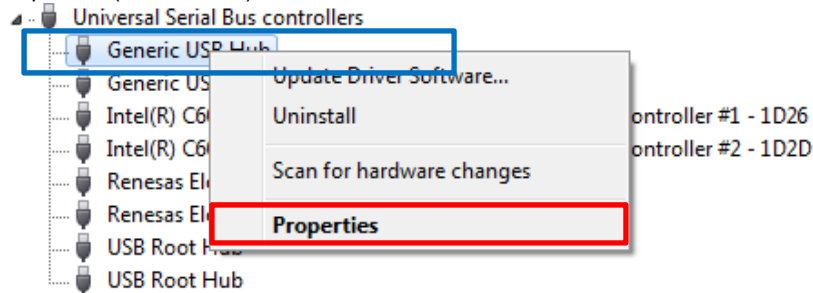
- d. This will open the Device Manager window shown below. (The S2-025-U-04 drivers are located under Ports (COM & LPT) or Universal Serial Bus controllers shown in the red boxes below.  
NOTE: In this example window, all drivers are functioning properly.



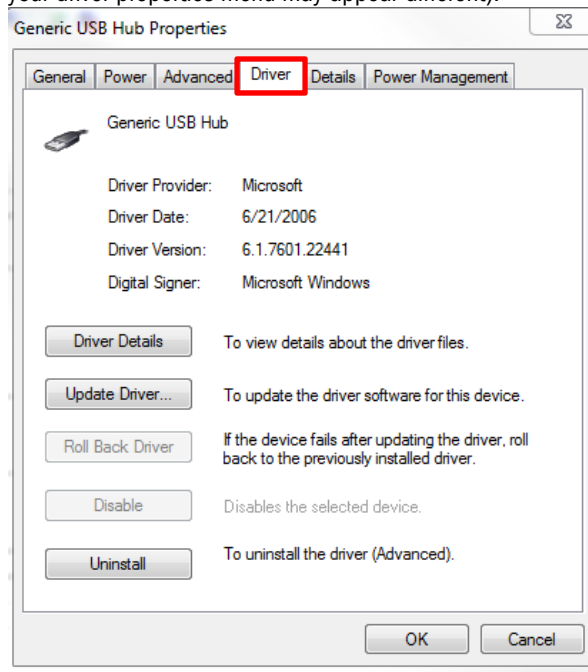
- e. To detect any issues, look for devices in the Device Manager that have an icon similar to the following (USB with a yellow background with exclamation mark signifying that the driver is not recognized).



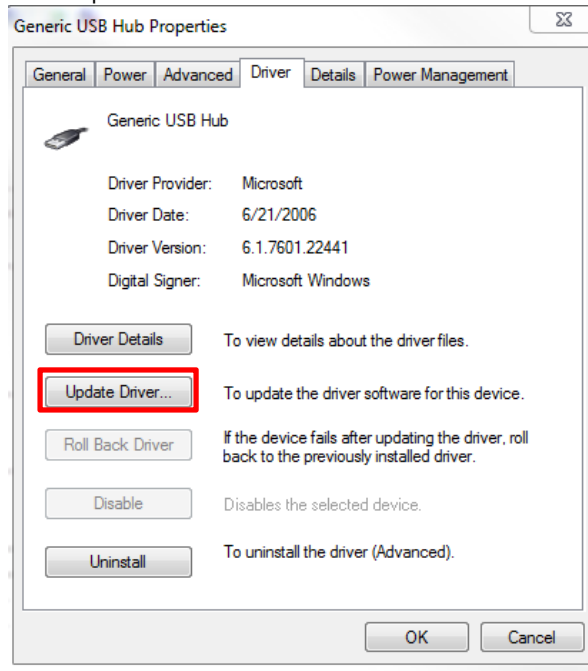
- f. Once the faulty driver has been identified, right click on that driver (shown in blue) then left click on "Properties" (shown in red)



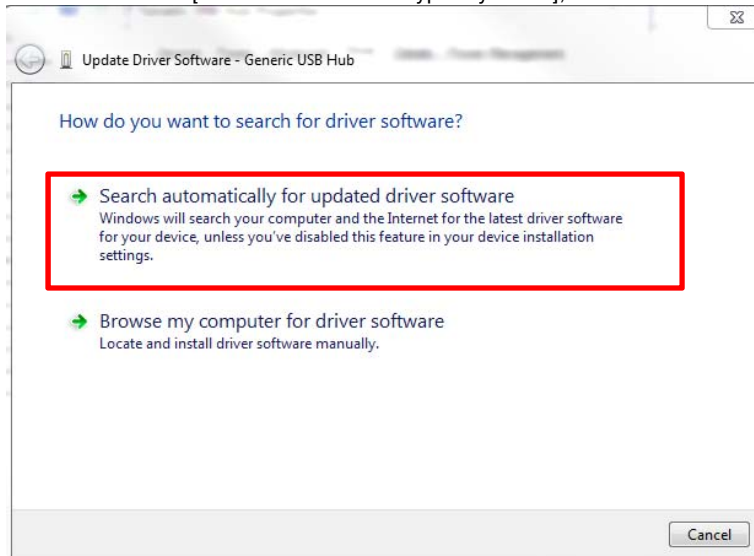
- g. Next, select on the Driver tab and click "Update Driver..." (the following image is for example purposes only your driver properties menu may appear different).



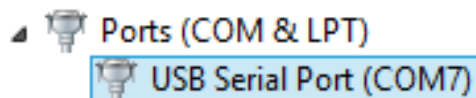
h. Click "Update Driver"



i. A new window will open. Click "Search automatically for updated driver software" (to enable the update to search online [where the drivers are typically found], establish an internet connection prior to searching).

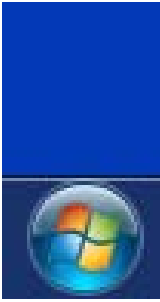


j. After the process is complete, the device under the Ports section on the Device Manager window should be visible and free of errors. If not, continue onto section 3. In this case, Port 7 is the connection to the S2-025-U-04

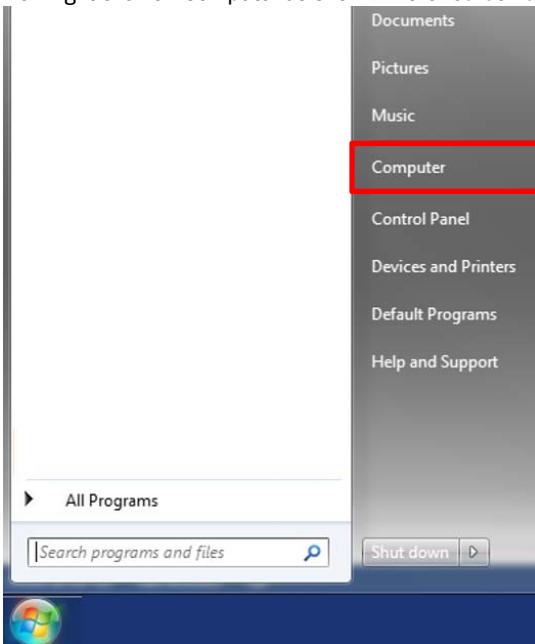


3. (CONTINUED)

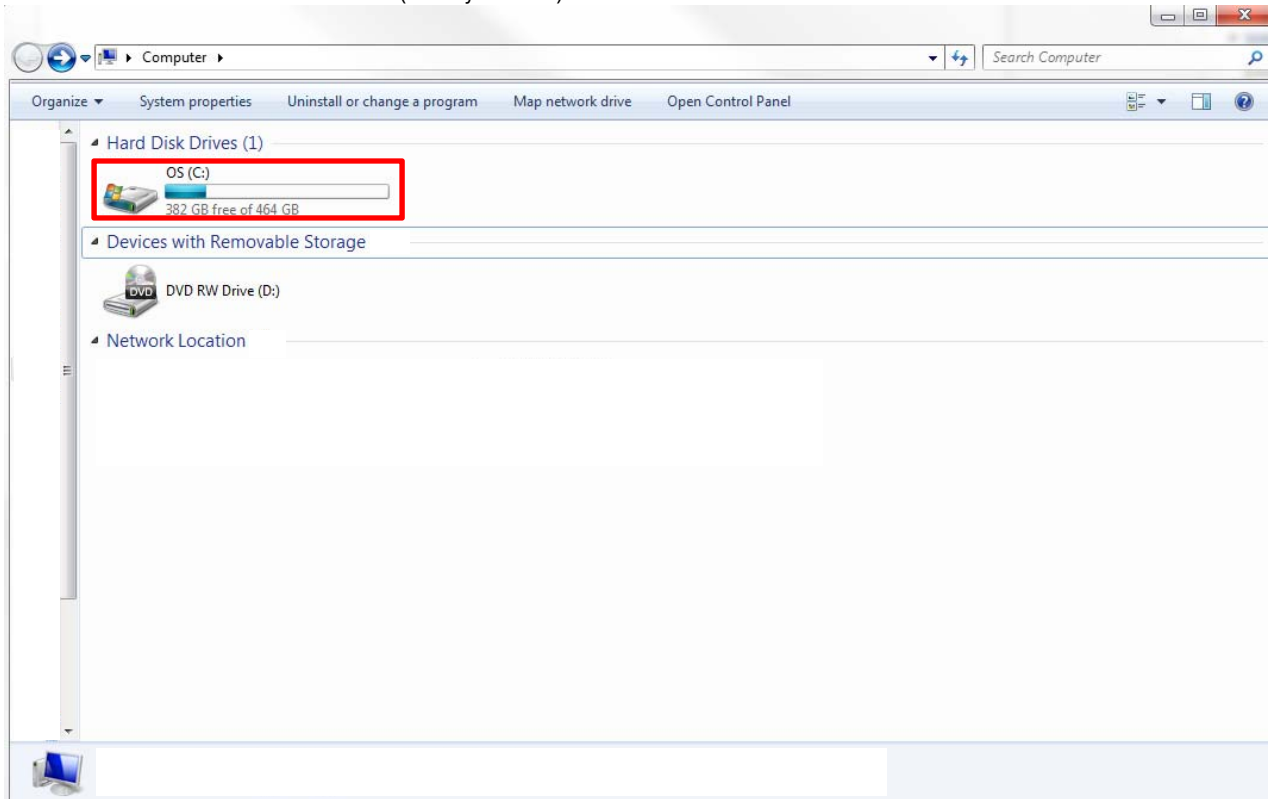
- a. Click the Start Menu button (located in the bottom left hand corner of your screen, as shown below).



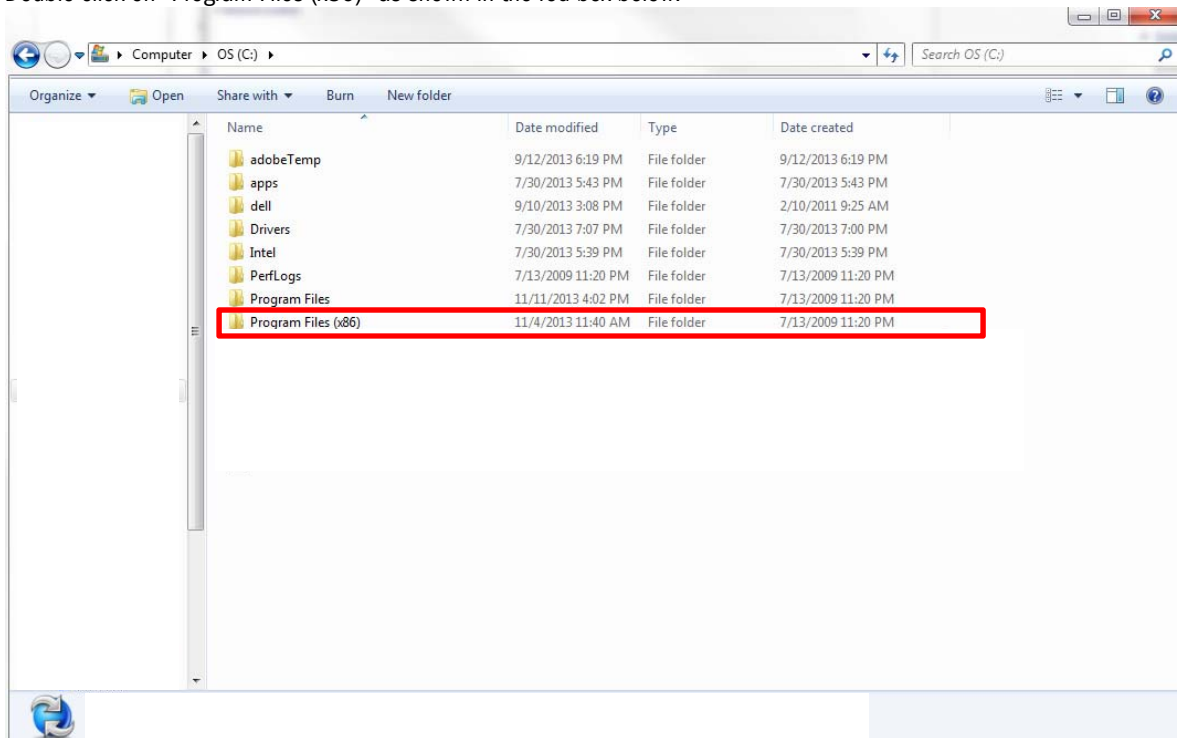
- b. Now right click on Computer as shown in the red box below



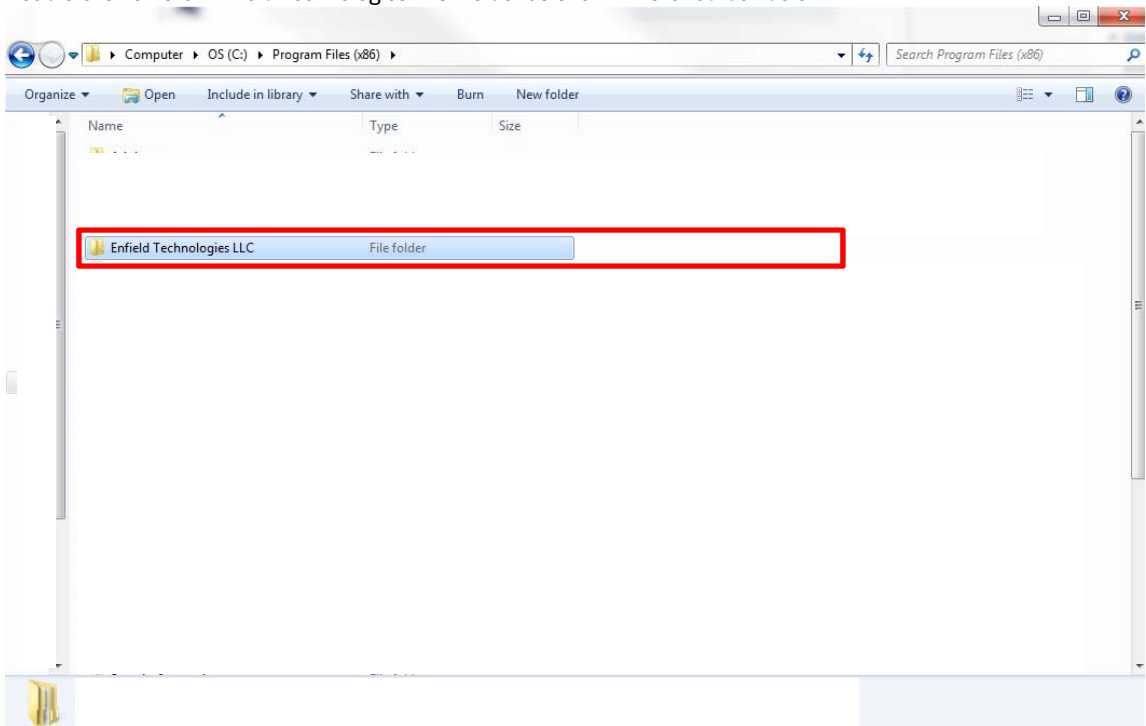
c. Double click on the hard drive icon (usually C: or D:) as shown in the red box below.



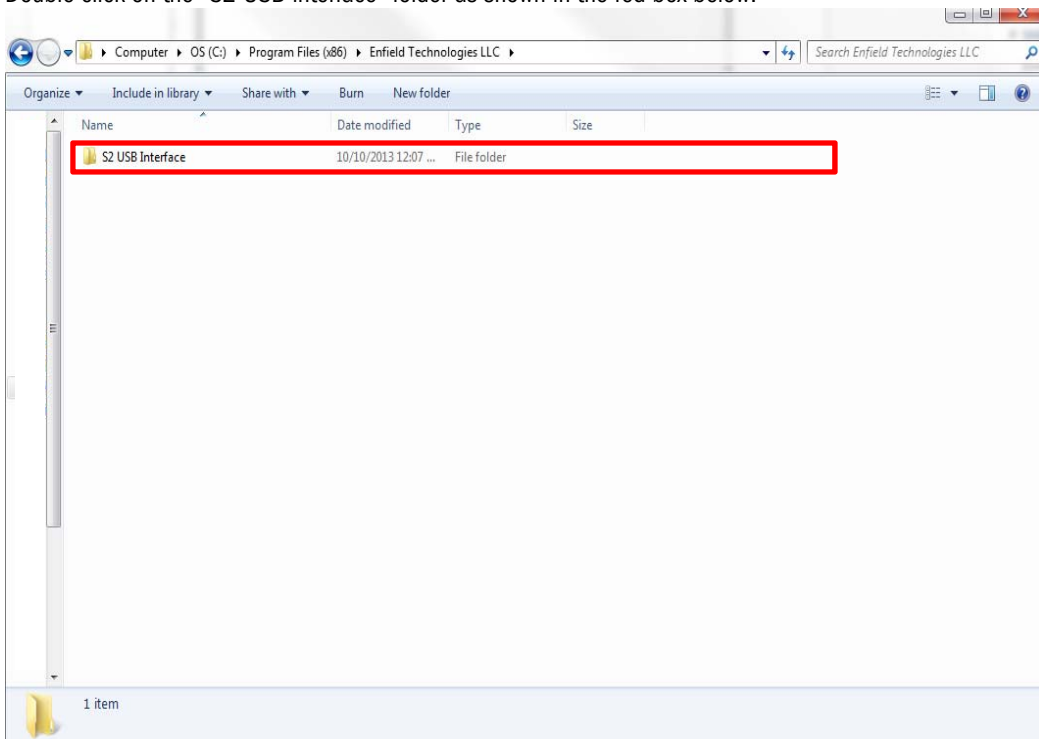
d. Double click on "Program Files (x86)" as shown in the red box below.



- e. Double click on the “Enfield Technologies LLC” folder as shown in the red box below.

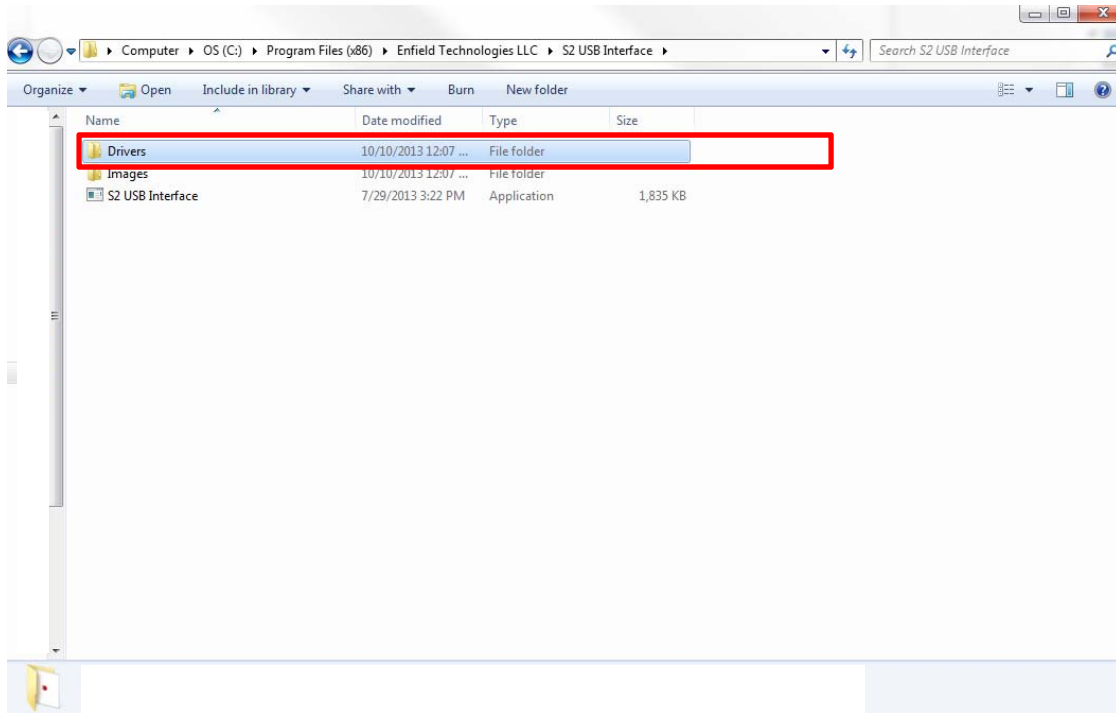


- f. Double click on the “S2 USB interface” folder as shown in the red box below.

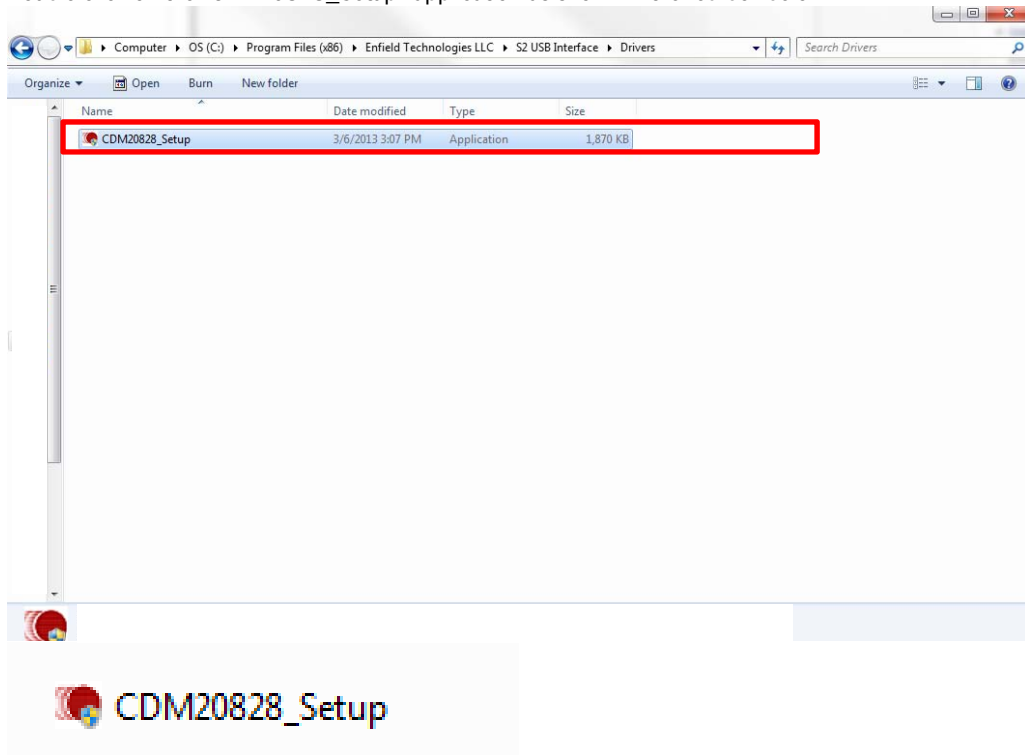




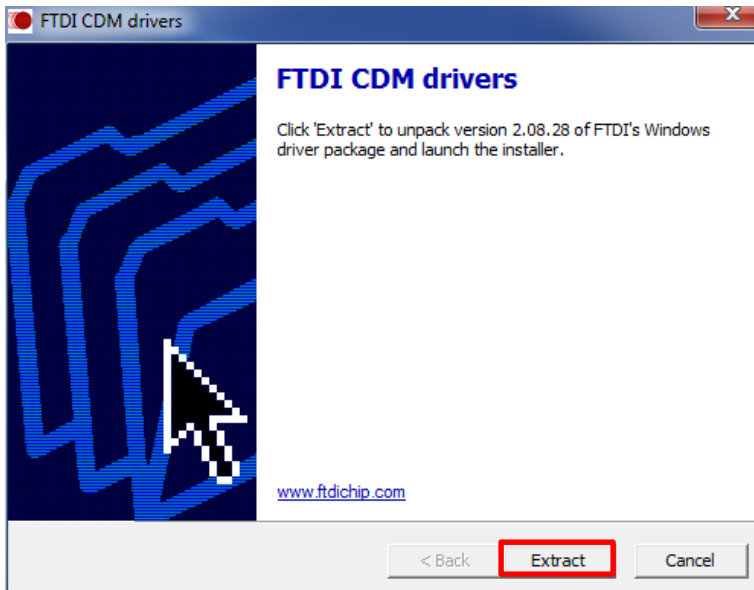
g. Double click on the “Drivers” folder as shown in the red box below.



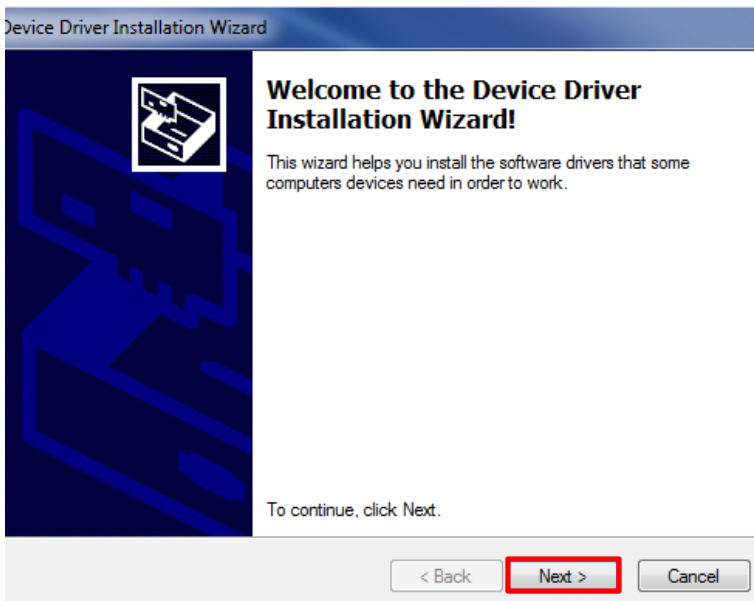
h. Double click on the “CDM20828\_Setup” application as shown in the red box below.



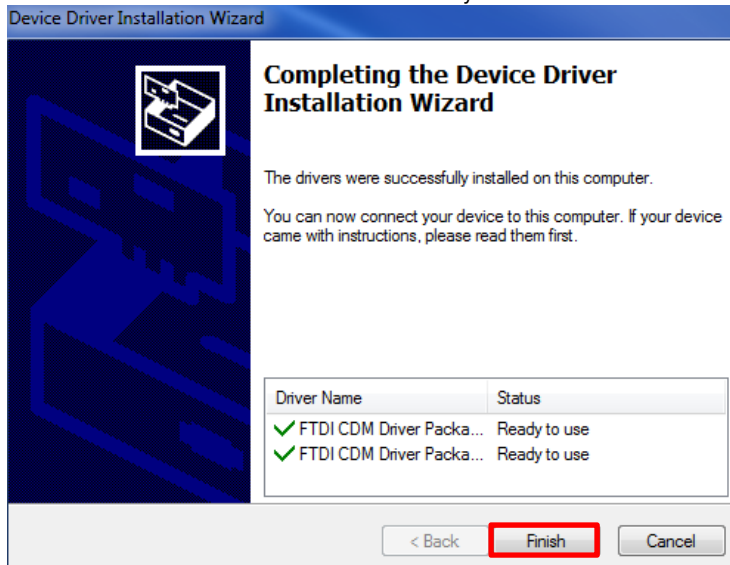
- i. Extract the files by clicking extract on the “Extract” button as shown in the red box below.



- j. Click the “Next” button as shown in the red box below. The following prompt will then be displayed.



- k. Click “Finish” as the driver has now successfully installed itself.



- l. Go back to section 2: **Opening S2-025-U-04 Interface** and restart the process of finding the COM port. If you still cannot locate and communicate the COM port please contact Enfield Technologies' Support Team.