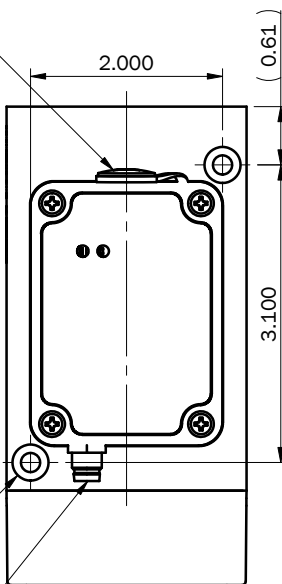


Micro USB B - Female connector (see note 5)

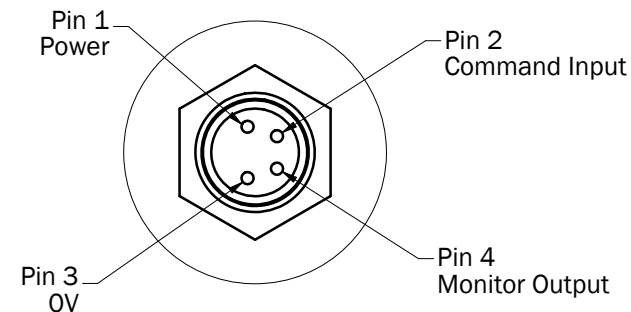


2 x ϕ 0.200 THRU ALL
 ϕ 0.375 ∇ 0.250
 See Note 4

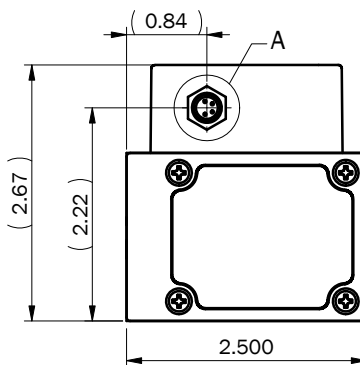
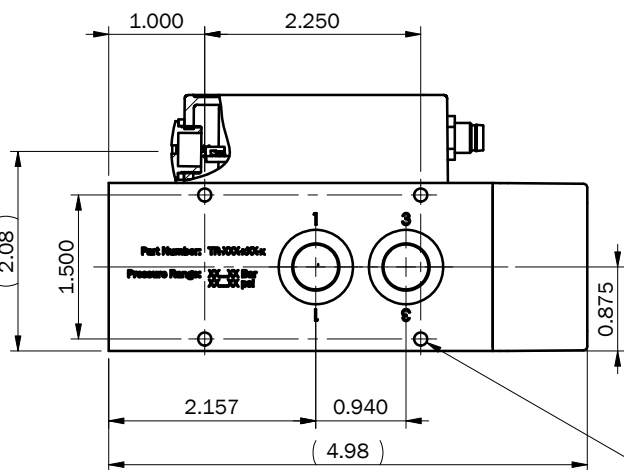
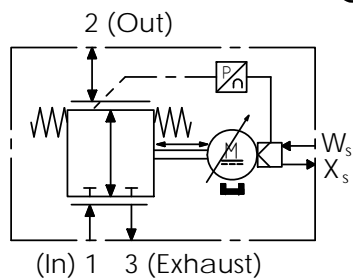
M8X1.0 Male contacts circular connector (see note 2)

Note:

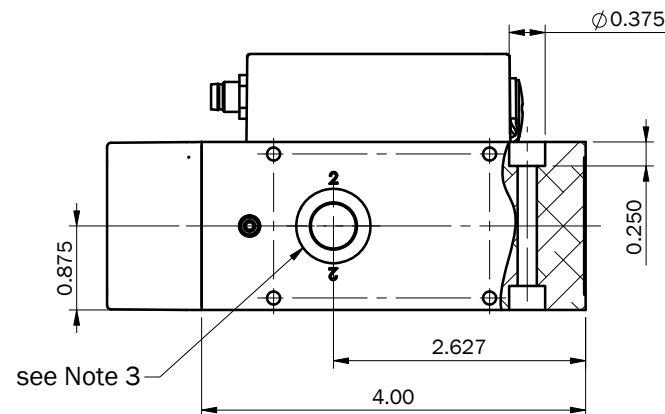
1. Refer to operating manual for wiring setup & operating procedures
2. M8 x 1.0 mm connector compatible with Enfield Technologies Cable: A-CBL-M8-04P-F-XXXX
3. All pneumatic connections 1/4 NPTF
4. Recommended mounting screws: 10-32 x 2.00" SHCS
5. USB connector compatible with Enfield Technologies Cable: A-CBL-SAUB-0405P-MM-XXXX



DETAIL A
 SCALE 2 : 1



4 x ϕ 0.136 ∇ 0.200
 8-32 UNC ∇ 0.200
 both sides



see Note 3

Standard Third Angle Projection
 Units: inch
 Unless specified otherwise:
 0.00 = \pm 0.010
 0.000 = \pm 0.005
 0.0000 = \pm 0.0005
 Angles = \pm 0.5°
 Break Sharp Edges

Drawing Name: TR-010-G10-S-OUTL		USB Servo-Pneumatic Electronic Pressure Regulator	
Material: N/A	Finish: N/A	Drawn: B Nagel	Date: 06/04/14 Rev: A
Model: V25-EPR Project: PR-1014A		Size: A	Scale: 1:2 Sheet 1 of 1

ENFIELD TECHNOLOGIES
 35 Nutmeg Drive
 Trumbull, CT 06611
 (203) 375-3100
 www.enfieldtech.com
This information is proprietary to Enfield Technologies and may be further protected by trademarks, copyrights, or patents.